



ACCOMMODATION BOOKING

Hotel accommodation can be arranged by the Conference Secretariat on request.

Please make your reservation preferably before 15 August 2013.

- Hotel assignment will be made on the first-come, first-serve basis.
- Hotel voucher will be sent to you by e-mail until 2 September 2013.

There are 3 ways how to book your hotel via Conference Secretariat:

1. Book your hotel **on-line – together with your registration** for FC 2013.
2. Book your hotel **on-line – later:**
 - open the e-mail “Registration confirmation for Fibre Concrete 2013” sent to you by registration system
 - click on the link, where you can check and view registration data - your Registration Review is opened
 - use the link “HOTEL BOOKING ORDER: Click here”, at the end of your “Registration Review”
 - fill in required information and submit data – Conference Secretariat will contact you asap.

3. Send an **e-mail** to terezia.nemcova@fs.cvut.cz.

Required Information when your hotel booking order is sent by e-mail:

Name and First name:

Date of arrival:

Approximate time of arrival to Prague:

Date of departure:

Number of nights:

Name of Hotel (2 choices):

Type of room (single, double, twin, etc.):

Number of rooms:

Form of payment (by card “on-line”, by card “mail order”, by bank transfer, on-site payment):

Special requirements or notes (smoker, disabled, etc.):

LIST OF HOTELS

- The price of the accommodation includes bed, breakfast, city charges and VAT.
- **The prices below are valid only when the order is sent to the Conference Secretariat (not to the hotel).**

Hotel / Hostel - Category	Single Room	Double or Twin	The way to the Conference Venue	Address
	EUR ¹⁾	EUR ¹⁾		
1. DAP *** (our opinion ****+)	40	60	venue	Vítězné náměstí 684/4, Praha 6 – Dejvice
2. Masarykova kolej ** (hostel)	35	55	695 m on foot	Thákurova 1, Praha 6 – Dejvice
3. Diplomat - superior) ****	95	95	417 m on foot	Evropská 15, Praha 6 – Dejvice
4. Rokoko **** ☺	95	100	metro A	Václavské nám. 38, Praha 1 – Nové Město
5. Ramada Prague City Centre**** ☺	105	110	metro A	Václavské nám. 41, Praha 1 – Nové Město
6. Adria Hotel Prague ****	100	110	metro A	Václavské nám. 26, Praha 1 – Nové Město
7. Art Nouveau Palace – deluxe *****	160	160	metro A	Panská 12, Praha 1 – Nové Město
8. Novoměstský hotel ***	70	80	metro A	Řeznická 4, Praha 1 – Nové Město
9. Liliova – standard **** ♣	90-105	115-130	metro A	Liliová 1099/18, Praha 1 – Staré Město
10. Trinidad – standard **** ♣	70-85	95-105	metro A	U Železné lávky 14, Praha 1 – Malá Strana
11. Waldstein - classic ****	105	120	metro A	Valdštejnské nám. 19/6, Praha 1 – Malá Strana

☺ Stay for 3 and more nights – 10% discount

♣ Booking on request only. The price is changed every date, the exact price is confirmed when the booking is done, Prague Castle view in hotel Trinidad for an extra charge ca. 0 - 30 EUR is available

¹⁾ the prices in CZK are available on request

Cancellation Fees and Refunds

- The Conference Secretariat must be notified in writing about any change in booking or cancellation
- In case of cancellation hotel booking after 2 September 2013 one night deposit will be charged.

This hotel is recommended by the Conference Secretariat.

DAP *** *Dům armády Praha (House of the Army, Prague)*, Vítězné nám. 684/4, Praha 6 – Dejvice
GPS: 50°5'58.558"N, 14°23'41.939"E

Location: ca. 25 min from the airport – 20 min by bus + 5 min on foot (300 m), 10 min to the Prague centre

Conference Venue

Hotel is situated just a few minutes from the Prague Castle. It is located in the centre of one of the most important Prague's Dejvice district. Hotel is lately reconstructed, up-to-date and comfortable, offers 51 non-smoking rooms. Buffet-style breakfast.

ROOM FACILITIES

TV/SAT, direct dial phone, air-condition, internet, toilet, bathroom with shower or tub, hair dryer

PROPERTY FACILITIES

24-hours service reception, hotel safe, currency exchange, city tours/excursions, elevator, credit cards accepted, parking in front of the hotel, pets allowed (extra charge), restaurant Evropa – air condition, breakfast restaurant – 2nd floor, sauna, fitness, congress hall



Masarykova kolej **, (Masaryk college - hostel), Thákurova 1, Praha 6 – Dejvice
GPS: 50°6'3.686"N, 14°23'13.383"E

Location: 25 min from the airport – 20 min by bus + 5 min on foot, 15 min to the Prague centre
The hostel is situated in a residential area within the Prague 6 district and in the campus of CTU

Way to the Conference venue: ca. 10 min on foot (ca. 695 m)

Masarykova kolej is CTU in Prague student's college, from parts used like hotel. The total capacity is 718 beds from single to triple rooms, 4 suites (hotel part has 64 beds). Buffet-style breakfast.

ROOM FACILITIES

TV/SAT, bathroom with shower, toilet, direct dial phone, some rooms has a small kitchen, internet access (free of charge)

PROPERTY FACILITIES

Wi-Fi in the lobby (free of charge), restaurant, pub, elevator, handicapped accessible, currency exchange, credit cards accepted, electronically guarded parking lot (extra charge)



Diplomat **** Evropská 15, 160 41 Praha 6 – Dejvice
GPS: 50°5'59.497"N, 14°23'23.303"E

Location: 20 minutes from the airport (by public transport), 10 minutes to the Prague centre by metro

Way to the Conference venue: ca. 6 minutes on foot (ca. 417 m)

The hotel, renowned for its excellent conference and business facilities, was opened in 1990 and newly renovated in 2007. The hotel is surrounded mainly by diplomatic residences. There are 398 standard or superior rooms and suites. Buffet-style breakfast.

ROOM FACILITIES

air condition, TV/SAT, pay TV, direct dial phone, internet access, safe, mini bar, bathroom, toilet, hair dryer

PROPERTY FACILITIES

PC/internet and Wi-Fi, 24-hours service reception, concierge, fax and secretarial service, post service, restaurant, lobby-bar, non-smoking rooms available, handicapped accessible, fitness centre, sauna, whirlpool, massages, steam bath, flower shop, hairdresser, manicure, souvenir shop, limousine services, conference rooms, hotel garage (extra charge)



Rokoko **** Václavské náměstí 38, Praha 1 – Nové Město
GPS: 50°4'53.695"N, 14°25'35.292"E

Location: directly in the historical and vibrant city centre of Prague, directly at the Wenceslas Square

Way to the Conference venue: ca. 15 min (2 min on foot to the metro station "Můstek (30 m)", then 10 min by metro line A to "Dejvická" station – exit "Vítězné náměstí")

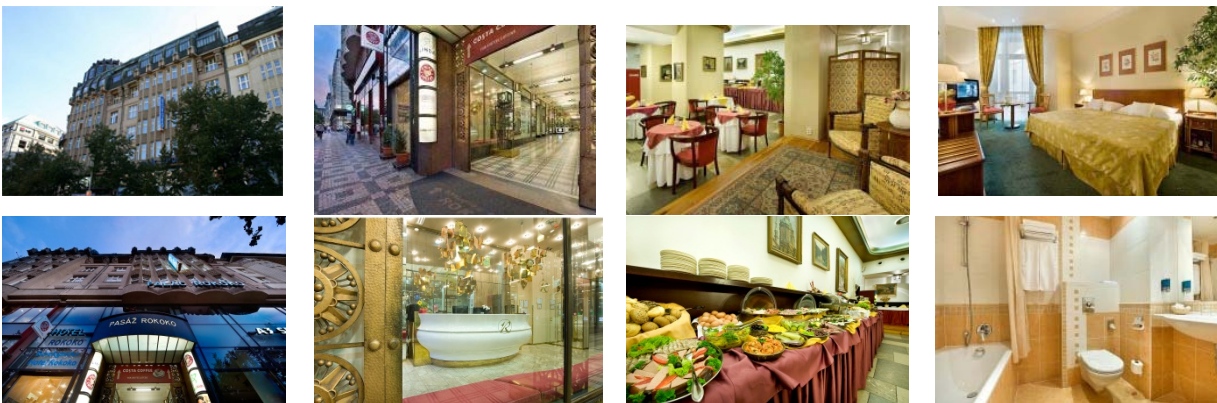
Hotel Rokoko has 48 rooms with a comfortable atmosphere - beautifully designed and decorated in elegant golden tones. There is one room for disable. Buffet breakfast served in an elegant room.

ROOM FACILITIES

internet free WI-FI, TV/SAT, direct dial phone, mini-bar, room safe, under floor heating in bathroom with tub or shower, hair dryer, toilet, ironing board and iron on request, air condition – only some of the rooms

PROPERTY FACILITIES

24-hours service reception & room service, currency exchange, concierge, credit cards accepted, laundry, garage parking nearby for an extra charge, own limousine service – taxi



Ramada Prague City Centre ****

Václavské náměstí 41, Praha 1 – Nové Město

GPS: 50°4'53.272"N, 14°25'40.819"E

Location: directly in the historical and vibrant city centre of Prague, directly at the Wenceslas Square

Way to the Conference venue: c. 15 min (5 min on foot to the metro station "Můstek (100 m)", then 10 min by metro line A to "Dejvická" station – exit "Vítězné náměstí"

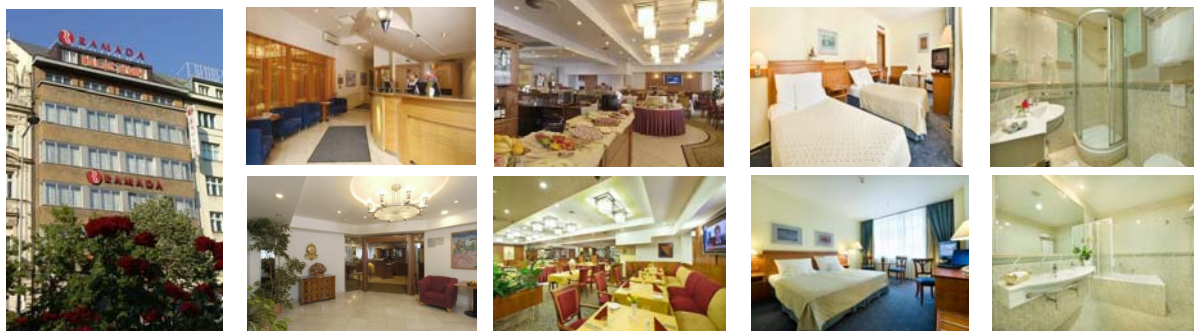
The hotel offers comfortable accommodation in 84 air-conditioned nicely furnished rooms and 14 apartments. There is also one room for disabled guests. Buffet breakfast. Non-smoking rooms are situated on the 2nd, 4th and 6th floor (50% of total hotel capacity). Some rooms offer a magnificent view of Wenceslas Square, other rooms of a closed courtyard. All rooms ensure a tranquil sleep and stay.

ROOM FACILITIES

internet free WI-FI, TV/SAT, direct dial phone, mini-bar, room safe, medical mattress, anti-allergy pillows, black-out curtains, under floor heating in bathroom with tub or shower, hair dryer, toilet, ironing board and iron on request, air condition, extra bed on request

PROPERTY FACILITIES

24-hours service reception & room service, currency exchange, concierge, restaurant, bar, business centre, credit cards accepted, laundry, garage parking for an extra charge, own limousine service – taxi



Adria Hotel Prague ****

Václavské náměstí 26, Praha 1 – Nové Město

GPS: 50°4'57.180"N, 14°25'30.742"E

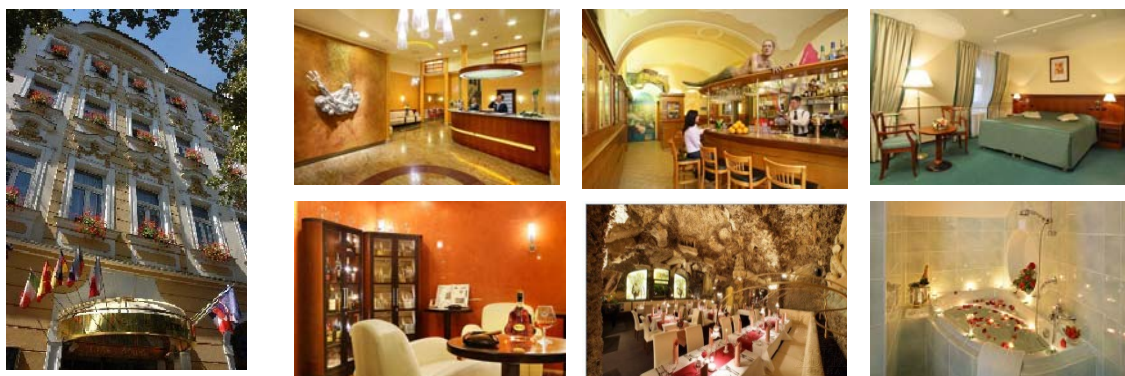
Location: directly in the historical and vibrant city centre of Prague, directly on the Wenceslas Square

Way to the conference venue: ca. 15 min (2 min on foot to the metro station "Můstek (60 m)", then 10 min by metro line A to "Dejvická" station – exit "Vítězné náměstí"

Renovated in 2007, this classical hotel now combines the nostalgic charm of Old Prague with the convenience of a modern 4-star Adria Hotel Prague. The hotel offers conference facilities including 2 conference rooms and 4 meeting rooms. Triton Restaurant guarantees an unforgettable dining experience in a unique stalactite-cave dining room, embellished by art nouveau decorations and sculptures of ancient mythology. Adria Hotel Prague is the first 4-star property in Prague awarded by EU Eco-label.

ROOMS

89 single, double rooms, junior suites and suites with a nice view of the Fransiscan Garden or of the Wenceslas Square, fully equipped rooms in the standard of the modern 4-star hotel, air condition, high-speed internet (3 Mbps), large and comfortable beds, thanks to the segmentation of the historical building of the hotel - every room is a little bit different, window isolation, smoking and non-smoking rooms



Art Nouveau Palace ***** Panská 12, Praha 1 – Nové Město
 GPS: 50°5'2.199"N, 14°25'39.825"E

Location: directly in the historical and vibrant city centre of Prague, just a few steps from Wenceslas Square

Way to the conference venue: ca. 15 min (2 min on foot to the metro station “Můstek (100 m)”, then 10 min by metro line A to "Dejvická" station – exit “Vítězné náměstí”

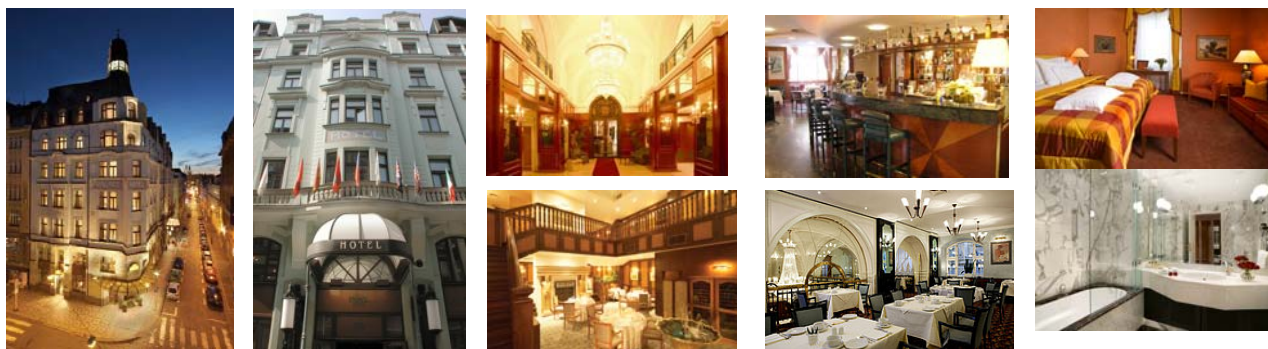
The 5-star hotel is widely renowned for its high service quality and luxurious atmosphere. All 114 rooms and 10 exclusive suites are individually and elegantly appointed.

ROOM FACILITIES

air condition, TV/SAT, pay TV, two direct dial phones, internet access, safe, mini-bar, coffee/tea making facilities, bathroom with tub, toilet, hair dryer

PROPERTY FACILITIES

PC/internet, 24-hours service reception & room service, currency exchange, concierge, city tours/excursions, credit cards accepted, hotel safe, air condition, lobby-bar, restaurant, conference room, elevator, handicapped accessible, dry cleaning service, laundry, hairdresser, fitness facility, sauna (free of charge), hotel garage (extra charge), pets allowed (extra charge)



Novoměstský hotel *** Řeznická 4, Praha 1 – Nové Město
 GPS: 50°4'40.995"N, 14°25'20.173"E

Location: quiet street in the downtown area (6 min from Wenceslas Square)

Way to the Conference venue: ca. 15 - 25 min – c. 6 min on foot to the metro station “Můstek (565 m)”, then 10 min by metro line A to "Dejvická" station – exit “Vítězné náměstí”

68 beds – double rooms and suites, buffet-style breakfast

ROOM FACILITIES

TV/SAT, direct dial phone, fridge, Wi-Fi (free of charge), toilet, shower

PROPERTY FACILITIES

24-hours service reception, Wi-Fi in the lobby (free of charge), opening window, city tours/excursions, elevator, credit cards accepted, currency exchange



Residence Trinidad ****, U Železné lávky 610/14, Praha 1 – Malá Strana

GPS: 50°5'28.507"N, 14°24'38.492"E

Location: on the left bank of the River Vltava, few steps from Charles Bridge, Old Town Square and surrounded by Prague Castle and the main Prague sights

Way to the conference venue: ca. 2 min on foot to the metro station “Malostranská” (110 m), 4 min. by metro to the “Dejvická” station – exit “Vítězné náměstí”

Large old building from the end of the 19th century was carefully renovated to provide comfortable and cosy guest rooms. It offers accommodation in 19 rooms with the maximum capacity of 43 people.

Hotel offers as spacious double or single rooms with view of Government Palace and Gardens so rooms with stunning views of the majestic Prague Castle including two rooms Suites Rooms with the view of Prague castle have individually controlled air condition and are available for an extra charge.

STANDARD ROOM FACILITIES

TV/SAT, direct dial phone, Wi-Fi (free of charge), safe, mini-bar, bathroom with shower or corner-bath, toilet, hair dryer, selected rooms offer air conditioning.

PROPERTY FACILITIES

Wi-Fi (free of charge), fax, room service, lift/elevator, 24-hours service reception, currency exchange, credit cards accepted, hotel safe, restaurant, lounge, breakfast room, cocktail bar, left luggage facility, laundry service, ironing facilities, babysitting, pets allowed, parking (extra charge)



Residence Liliová ***, Liliová 1070/18, Praha 1 – Staré Město

50°5'8.628"N, 14°24'59.396"E

Location: right in the historical centre of Prague, just a few steps from Charles Bridge and only a few minutes from Old town Square.

Way to the conference venue: ca. 5 min on foot to the metro station “Staroměstská” (365 m), 5 min by metro to the “Dejvická” station – exit “Vítězné náměstí”

Hotel Residence Liliova provides a total of 25 rooms .All rooms contain two beds which can be put together or left separate, triple rooms are available as well.

ROOM FACILITIES

TV/SAT, internet access, air-condition, direct dial phone, mini-bar, room safe, bathroom with tub or shower, toilet, hairdryer

PROPERTY FACILITIES

24-hours service reception, currency exchange, credit cards accepted, restaurant, lobby bar



Waldstein hotel **** Valdštejnské náměstí 19/6, Praha 1 – Malá Strana
GPS: 50°5'22.114"N, 14°24'20.354"E

Location: most attractive part of Prague, few steps from Charles Bridge, Old Town Square and surrounded by Prague Castle and the main Prague sights

Way to the conference venue: ca. 5 min on foot to the metro station “Malostranská” (390 m), 5 min. by metro line A to “Dejvická” station – exit “Vítězné náměstí”

The Historical building (14th century) offers accommodation in 34 rooms and suites (9 deluxe equipped apartments, 10 deluxe equipped suites or studios and 15 standard equipped rooms) comfortably equipped with antique furniture. Some rooms have original wooden renaissance ceilings. Hot buffet breakfast is served in a beautiful renaissance vaulted cellar with an original well. During summer, clients can relax in a pleasant atmosphere of the hotel atrium.

STANDARD ROOM FACILITIES

TV/SAT, direct dial phone, Wi-Fi (free of charge), safe, mini-bar, coffee/tea making facilities, bathroom with shower or tub, toilet, hair dryer, toiletries, sewing kit

PROPERTY FACILITIES

PC/internet & Wi-Fi in the lobby (free of charge), non-smoking rooms available, opening windows, 24-hours service reception, currency exchange, credit cards accepted, hotel safe, city tours/excursions, no lift (3 stores), handicapped accessible, cleaning service, clothes-press available, laundry, guarded parking (extra charge), pets allowed (free of charge)

