



## ACCOMMODATION BOOKING

Accommodation is not included in the conference registration fee. Hotel accommodation can be arranged by the Conference Secretariat on request.

**Please remember to book hotel early in order to secure your preferred accommodation – recommended date is before 15 August 2015.**

- All hotels are located within a reasonable distance from the conference venue – see map.
- Hotel assignment will be made on the first-come, first-serve basis.
- Hotel voucher will be emailed to you until 2 September 2015.

There are 3 ways how to book your hotel via Conference Secretariat:

1. Book your hotel **on-line – together with your registration** for FC 2015.
2. Book your hotel **on-line – later:**
  - open the e-mail “Registration Confirmation for Fibre Concrete 2015” sent to you by registration system
  - click on the hotel booking link
  - fill in required information and submit data – Conference Secretariat will contact you asap.
3. Send an **e-mail** to [terezia.nemcova@fs.cvut.cz](mailto:terezia.nemcova@fs.cvut.cz).

**Required Information when your hotel booking order is sent by e-mail:**

Surname and first name:

Date of arrival:

Date of departure:

Name of hotel (first choice):

Type of room (single, double, twin, etc.):

Special requirements or notes (smoker, disabled, etc.):

Form of payment (by card “on-line”, by card “mail order”, by bank transfer, on-site payment):

Approximate time of arrival to Prague:

Number of nights:

Second hotel choice:

Number of rooms:

## LIST OF HOTELS

- The price of the accommodation includes bed, breakfast in buffet style, WiFi, VAT and city charges.
- **The prices below are valid only when the order is sent to the Conference Secretariat (not to the hotel).**
- Please note: although rates quoted are discounted we cannot guarantee that the rates offered below are the cheapest available as hotels have special promotions on from time to time.
- **5 stars hotels are available on your request – do not hesitate to ask Conference Secretariat for the offer by e-mail.**

Hotel / Hostel – Category	Single /S use Room	Double or Twin	The way to the Conference Venue	Address
	EUR <sup>1)</sup>	EUR <sup>1)</sup>		
1. DAP *** (our opinion ****)	35/40	60	Venue	Vítězné náměstí 684/4, Praha 6 – Dejvice
2. Masarykova kolej ** (hostel)	30	45	670 m on foot	Thákurova 1, Praha 6 – Dejvice
3. Art Meda **** (our opinion ***)	45	60	380 m on foot	Národní obrany 33, Praha 6 – Bubeneč
4. Diplomat - superior ****	90	100	390 m on foot	Evropská 15, Praha 6 – Dejvice
5. Novoměstský hotel ***	70	80	metro A	Řeznická 4, Praha 1 – Nové Město
6. Juliš Hotel - standard ****	100	105	metro A	Václavské nám. 22, Praha 1 – Nové Město
7. Rokoko - standard ****	100	105	metro A	Václavské nám. 38, Praha 1 – Nové Město
8. Ramada Prague CC - standard ****	105	110	metro A	Václavské nám. 41, Praha 1 – Nové Město
9. Waldstein - classic ****	100	110	metro A	Valdštejnské nám. 19/6, Praha 1 – Malá Strana
10. Klárov - superior **** (limited number of rooms)	115	120	metro A	U Železné lávky 14, Praha 1 – Malá Strana

<sup>1)</sup> the prices in CZK are available on request

## Cancellation Fees and Refunds

- The Conference Secretariat must be notified in writing about any change in booking or cancellation
- In case of hotel booking cancellation later than one working day before arrival one night deposit will be charged.

**DAP \*\*\*** *Dům armády Praha (House of the Army, Prague), Vítězné nám. 684/4, Praha 6 – Dejvice*  
GPS: 50°5'58.558"N, 14°23'41.939"E

**Location:** ca. 30 min from the airport – 20-25 min by bus and metro + 2 min on foot (ca. 100 m)

## Conference Venue

Hotel is situated just a few minutes from the Prague Castle and ca. 10 min by metro to the town centre. It is located in the centre of one of the Prague's Dejvice district. Hotel is lately reconstructed, up-to-date and comfortable, offers 50 non-smoking rooms (9 single, 6 twin, 32 double, 3 suites). Buffet-style breakfast.

### ROOM FACILITIES

TV/SAT, direct dial phone, safe, air-condition, WiFi, toilet, bathroom with shower or tub, hair dryer

### PROPERTY FACILITIES

24-hours service reception, hotel safe, currency exchange, city tours/excursions, elevator, payment cards accepted, parking in front of the hotel, pets allowed (extra charge), restaurant Evropa – air condition, breakfast restaurant – 2<sup>nd</sup> floor, sauna, fitness, congress hall



\*\*\*\*\*

**Masarykova kolej \*\*** (Masaryk college - hostel), Thákurova 1, Praha 6 – Dejvice  
GPS: 50°6'3.686"N, 14°23'13.383"E

**Location:** ca. 35 min from the airport – 20-25 min by bus and metro + ca. 8 min on foot (ca. 430 m)  
The hostel is situated in a residential area within the Prague 6 district and in the campus of CTU  
10 minutes to the Prague centre by metro

**Way to the Conference venue:** ca. 11 min on foot (ca. 670 m)

Masarykova kolej is CTU in Prague student's college, from parts used like hotel. The total capacity is 718 beds from single to triple rooms, 4 suites (hotel part has 64 beds). Buffet-style breakfast.

### ROOM FACILITIES

TV/SAT, bathroom with shower, toilet, direct dial phone, some rooms has a small kitchen, internet access (free of charge)

### PROPERTY FACILITIES

Wi-Fi in the lobby (free of charge), restaurant, pub, elevator, handicapped accessible, currency exchange, credit cards accepted, electronically guarded parking lot (extra charge)



\*\*\*\*\*

**Art Hotel Meda \*\*\*\* (our opinion – 3 stars)** Národní obrany 33, Praha 6 – Bubeneč  
GPS: 50°6'4.178"N, 14°23'51.584"E

**Location:** ca. 30 min from the airport – 20-25 min by bus and metro + 6 min on foot (ca. 400 m)  
10 minutes to the Prague centre by metro

**Way to the Conference venue:** ca. 6 min on foot (380 m)

The hotel was renovated in 2008 and offers 43 rooms all comfortably equipped with modern furniture. Non smoking rooms are available. Buffet-style breakfast.

**ROOM FACILITIES**

TV/SAT, direct dial phone, fridge, Wi-Fi (free of charge), room safe (free of charge), coffee/tea making facilities, toilet, bathroom with shower or tub, toiletries, sewing kit, hair dryer

**PROPERTY FACILITIES**

24-hours service reception, PC/internet & Wi-Fi in the lobby (free of charge), opening window, currency exchange, city tours/excursions, handicapped accessible, elevator, cleaning service, laundry, clothes-press available, credit cards accepted, parking in front of the hotel (extra charge), pets allowed (free of charge)



\*\*\*\*\*

**Diplomat \*\*\*\*** Evropská 15, 160 41 Praha 6 – Dejvice  
GPS: 50°5'59.497"N, 14°23'23.303"E

**Location:** ca. 20 min from the airport – 20-25 min by bus and metro + 3 min on foot (ca. 130 m),  
10 minutes to the Prague centre by metro

**Way to the Conference venue:** ca. 6 minutes on foot (ca. 390 m)

The hotel, renowned for its excellent conference and business facilities, was opened in 1990 and newly renovated in 2007. The hotel is surrounded mainly by diplomatic residences. There are 398 standard or superior rooms and suites. Buffet-style breakfast.

**ROOM FACILITIES**

air condition, TV/SAT, pay TV, direct dial phone, internet access, safe, mini bar, bathroom, toilet, hair dryer

**PROPERTY FACILITIES**

PC/internet and Wi-Fi, 24-hours service reception, concierge, fax and secretarial service, post service, restaurant, lobby-bar, non-smoking rooms available, handicapped accessible, fitness centre, sauna, whirlpool, massages, steam bath, flower shop, hairdresser, manicure, souvenir shop, limousine services, conference rooms, hotel garage (extra charge)



\*\*\*\*\*



**Novoměstský hotel \*\*\*** Řeznická 4, Praha 1 – Nové Město  
 GPS: 50°4'40.995"N, 14°25'20.173"E

**Location:** quiet street in the downtown area (6 min from Wenceslas Square)

**Way to the Conference venue:** ca. 15 - 25 min – c. 6 min on foot to the metro station “Můstek (565 m)”, then 10 min by metro line A to "Dejvická" station – exit “Vítězné náměstí”

68 beds – double rooms and suites, buffet-style breakfast

**ROOM FACILITIES**

TV/SAT, direct dial phone, fridge, Wi-Fi (free of charge), toilet, shower

**PROPERTY FACILITIES**

24-hours service reception, Wi-Fi in the lobby (free of charge), opening window, city tours/excursions, elevator, credit cards accepted, currency exchange



\*\*\*\*\*

**Juliš Hotel \*\*\*\*** Václavské náměstí 22, Praha 1 – Nové Město  
 GPS: 50°4'57.85"N 14°25'29.786"E

**Location:** directly in the historical and vibrant city centre of Prague, directly at the Wenceslas Square

**Way to the Meeting venue:** c. 15 min (5 min on foot to the metro station “Můstek (100 m)”, then 10 min by metro line A to "Dejvická" station – exit “Vítězné náměstí”

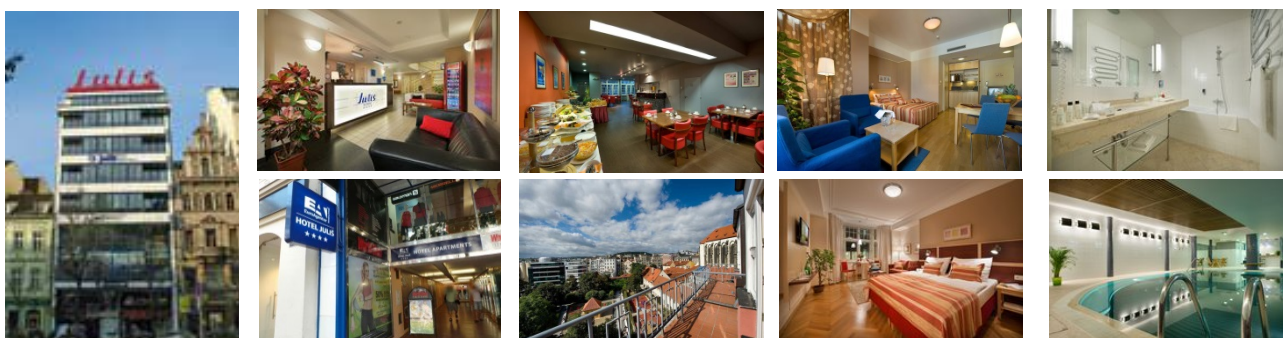
Hotel Juliš has 72 large air-conditioned executive (with balcony) or standard rooms with built-in kitchenette. The rooms have wonderful views of the city of Prague, Wenceslas Square, romantic Franciscan Garden; the rooms on the upper floors have also views of Prague Castle and Petrin Hill. Buffet-style breakfast.

**ROOM FACILITIES**

internet free WI-FI, TV/SAT, direct dial phone, safe deposit box, bathroom with tub or shower (bathrobe, slippers), hair dryer, toilet, air condition, wooden floors without carpets, dining table and built-in kitchenette (2-zone electric hob, kettle, microwave oven, fridge/minibar, dishwasher), cookware on request in the reception

**PROPERTY FACILITIES**

24-hours service reception, business centre, internet corner, currency exchange, payment cards accepted, laundry service, iron & ironing board, baby cot, garage parking for an extra charge, hotel taxi service and transfers, non-smoking Chess Café "Šachový Václavák", small conference room, indoor swimming pool, World Class wellness & fitness centrum



\*\*\*\*\*

**Rokoko \*\*\*\*** Václavské náměstí 38, Praha 1 – Nové Město  
GPS: 50°4'53.695"N, 14°25'35.292"E

**Location:** directly in the historical and vibrant city centre of Prague, directly at the Wenceslas Square

**Way to the Conference venue:** ca. 15 min (2 min on foot to the metro station "Můstek (30 m)", then 10 min by metro line A to "Dejvická" station – exit "Vítězné náměstí"

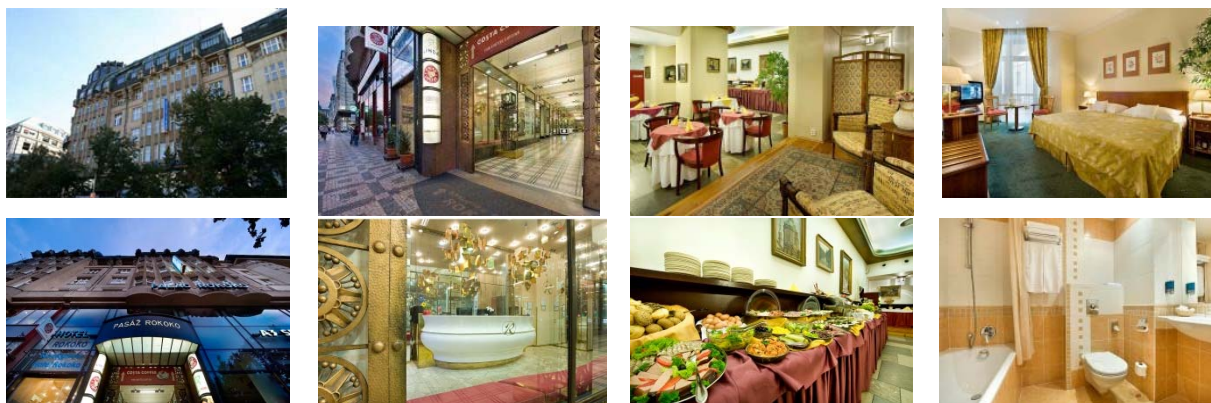
Hotel Rokoko has 48 rooms with a comfortable atmosphere - beautifully designed and decorated in elegant golden tones. There is one room for disable. Buffet breakfast served in an elegant room.

#### ROOM FACILITIES

internet free WI-FI, TV/SAT, direct dial phone, mini-bar, room safe, under floor heating in bathroom with tub or shower, hair dryer, toilet, ironing board and iron on request, air condition – only some of the rooms

#### PROPERTY FACILITIES

24-hours service reception & room service, currency exchange, concierge, credit cards accepted, laundry, garage parking nearby for an extra charge, own limousine service – taxi



\*\*\*\*\*

**Ramada Prague City Centre \*\*\*\*** Václavské náměstí 41, Praha 1 – Nové Město  
GPS: 50°4'53.272"N, 14°25'40.819"E

**Location:** directly in the historical and vibrant city centre of Prague, directly at the Wenceslas Square

**Way to the Conference venue:** c. 15 min (5 min on foot to the metro station "Můstek (100 m)", then 10 min by metro line A to "Dejvická" station – exit "Vítězné náměstí"

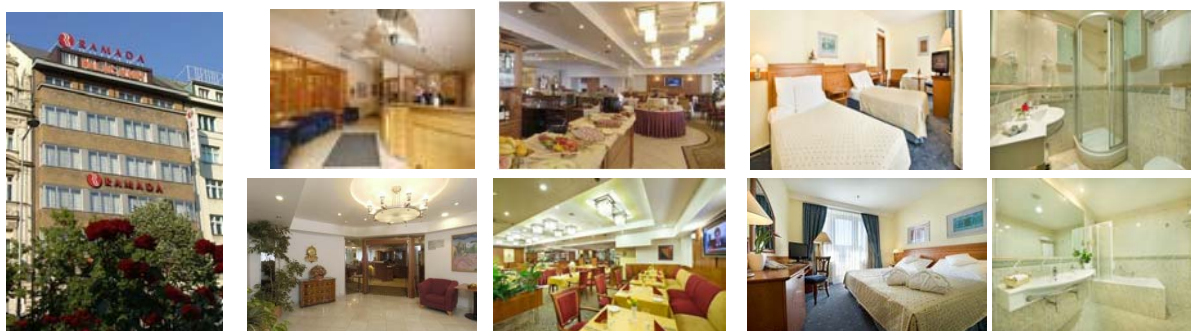
The hotel offers comfortable accommodation in 84 air-conditioned nicely furnished rooms and 14 apartments. There is also one room for disabled guests. Buffet breakfast. Non-smoking rooms are situated on the 2nd, 4th and 6th floor (50% of total hotel capacity). Some rooms offer a magnificent view of Wenceslas Square, other rooms of a closed courtyard. All rooms ensure a tranquil sleep and stay.

#### ROOM FACILITIES

internet free WI-FI, TV/SAT, direct dial phone, mini-bar, room safe, medical mattress, anti-allergy pillows, black-out curtains, under floor heating in bathroom with tub or shower, hair dryer, toilet, ironing board and iron on request, extra bed on request

#### PROPERTY FACILITIES

24-hours service reception & room service, currency exchange, concierge, restaurant, bar, business centre, credit cards accepted, laundry, garage parking for an extra charge, own limousine service – taxi



\*\*\*\*\*



**Waldstein hotel \*\*\*\*** Valdštejnské náměstí 19/6, Praha 1 – Malá Strana  
GPS: 50°5'22.114"N, 14°24'20.354"E

**Location:** most attractive part of Prague, few steps from Charles Bridge, Old Town Square and surrounded by Prague Castle and the main Prague sights

**Way to the conference venue:** ca. 5 min on foot to the metro station “Malostranská” (390 m), 5 min. by metro line A to “Dejvická” station – exit “Vítězné náměstí”

The Historical building (14th century) offers accommodation in 34 rooms and suites (9 deluxe equipped apartments, 10 deluxe equipped suites or studios and 15 standard equipped rooms) comfortably equipped with antique furniture. Some rooms have original wooden renaissance ceilings. Hot buffet breakfast is served in a beautiful renaissance vaulted cellar with an original well. During summer, clients can relax in a pleasant atmosphere of the hotel atrium.

**STANDARD ROOM FACILITIES**

TV/SAT, direct dial phone, Wi-Fi (free of charge), safe, mini-bar, coffee/tea making facilities, bathroom with shower or tub, toilet, hair dryer, toiletries, sewing kit

**PROPERTY FACILITIES**

PC/internet & Wi-Fi in the lobby (free of charge), non-smoking rooms available, opening windows, 24-hours service reception, currency exchange, credit cards accepted, hotel safe, city tours/excursions, no lift (3 stores), handicapped accessible, cleaning service, clothes-press available, laundry, guarded parking (extra charge), pets allowed (free of charge)



\*\*\*\*\*

**Boutique Hotel Klárov \*\*\*\*** U Železné lávky 567/12, Praha 1 – Malá Strana  
GPS: 50°5'27.924"N, 14°24'38.714"E

**Location:** Hotel has great views - on the left bank of the River Vltava, few steps from Charles Bridge, Old Town Square and surrounded by Prague Castle and the main Prague sights

**Way to the conference venue:** ca. 2 min on foot to the metro station “Malostranská” (110 m), 4 min. by metro to the “Dejvická” station – exit “Vítězné náměstí”

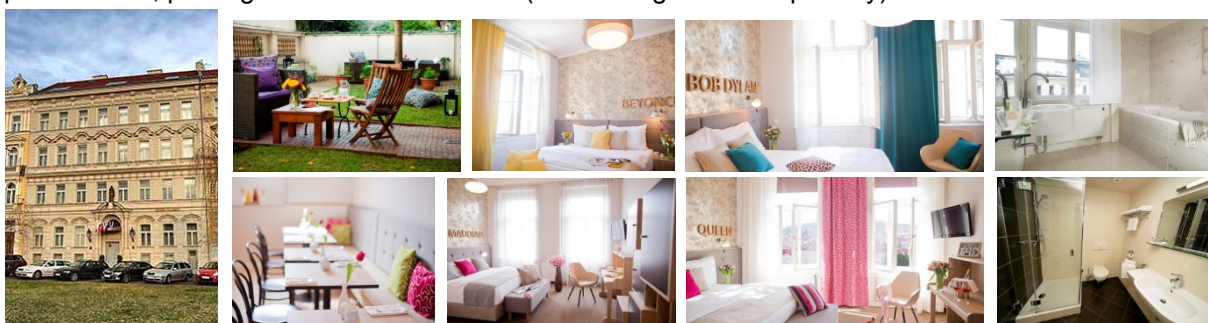
This Boutique Hotel, situated in the Neo-Classic building from the end of the 19th century, was carefully renovated (in 2015) to provide comfortable and cosy guest rooms. It offers accommodation in 19 rooms with the maximum capacity of 43 people. Hotel offers as spacious double or single rooms with view of Government Palace and Gardens so rooms with stunning views of the majestic Prague Castle including two rooms Suites Rooms with the view of Prague castle have individually controlled air condition and are available for an extra charge. The property is Kids and Pets Friendly and accessible by car.

**STANDARD ROOM FACILITIES**

TV/SAT, direct dial phone, free Wi-Fi, safe, mini-bar, bathroom with shower or bath, toilet, hair dryer, selected rooms offer air conditioning, tea and coffee making facilities

**PROPERTY FACILITIES**

Wi-Fi (free of charge), fax/photocopying, room service, lift, 24-hour front desk, business centre, lounge/TV area, breakfast room, small private garden, laundry, babysitting/child services, ironing service, dry cleaning, pets allowed, parking/reservation is needed (extra charge EUR 24 per day)



\*\*\*\*\*



