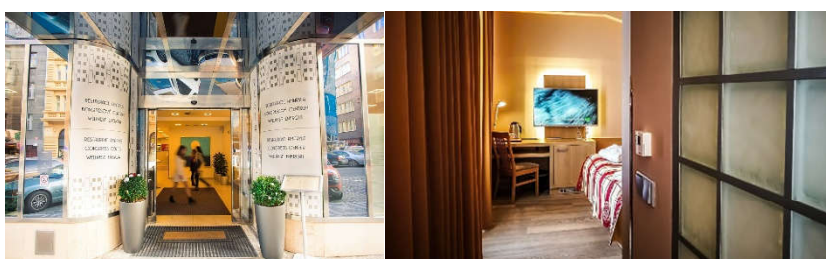


Hotel Waldstein ****, Valdštejnské náměstí 6/19, Prague 1



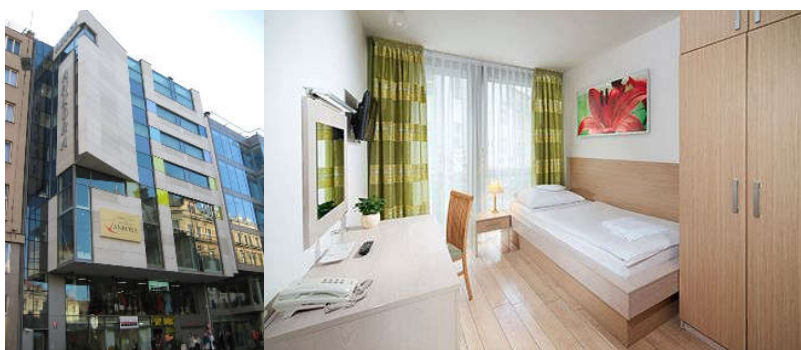
The hotel is in the middle of the pitoresque part of the city center called Lesser Town (Malá Strana). The hotel offers its guests: reception 24h, hot and cold buffet breakfast, wake-up call, luggage storage, safe-deposit storage free of charge, free WiFi Internet in the entire hotel, PC available in lobby, touchpads available, exchange services, toiletries, laundry, sale of tickets for public transport, pets allowed free of charge, transportation services, ironing facilities, reservation services for restaurants, concerts, theaters, copier, scanner. Rooms: bathroom (shower or bath, toilet), LCD television, phone, WiFi for free, minibar, safe deposit box, coffee- and tea-making facilities free of charge, comfortably equipped rooms with original antique and historical furniture, shoe cleaner, sewing, clothes brush, hairdryer, toiletries for free, all rooms are non smoking. **Connection to the conference venue:** approx. 10 minutes (metro from station Malostranská to Muzeum – 3rd station)

Hotel Amarilis ****, Štěpánská 18, Prague, Prague 1



Modern funkcionalistic hotel in the Štěpánská street in the immediate vicinity to the conference venue. Hotel is equipped with all items in the 4* category and offers its guests: generous breakfasts, lobby bar, free WiFi, Pet friendly, air-conditioned rooms, wheelchair accessible, all rooms are furnished using Feng Shui principles (with Air conditioning, free Wi-Fi connection, LCD TV, telephone, safe and fully-equipped bathroom, coffee and tea set). **Connection to the conference venue:** 4 minutes walk

Hotel Ankora ***, Kateřinská 42, Prague 2



Hotel offers comfortable accommodation in Prague city centre in 40 modern rooms in an eight-floor building with a lift. The rooms are furnished in Art Deco style and equipped with automatic air-conditioning with manual correction. The biggest pride of the hotel are its panoramic windows on the 7th and 8th floor offering nice views of the historical centre of Prague. Rooms are equipped with medical mattresses and anti-allergy bed clothes, mini-bar, high-speed Internet connection, satellite LCD/TV and direct-dial telephone. Bathrooms have a shower or bath-tub, toilette, big mirror and hair-dryer. The hotel disposes of own underground garages, restaurant and lobby bar. **Connection to the conference venue:** approx.: 10 minutes walk

Hotel Andante ***, Ve Smečkách 1408/4, Prague 1



Andante Hotel is a comfortable 3-star hotel located just a few steps from the Prague's main boulevard Wenceslas Square - the historical heart of the city - known as a New Town. Today's Wenceslas Square is the cultural and business centre of the country as well as a marvellous combination of grandiose old architecture with the most modern structures. Hotel offers comfortable Single, Double, Triple, Family and Terrace Rooms, all with free Wi-Fi, full buffet breakfast, friendly staff and family atmosphere. **Connection to the conference venue:** approx. 6 minutes walk

Hotel 16 u Sv. Kateřiny ****, Kateřinská 16, Prague 2



The Art Nouveau hotel offers the following services and amenities: hotel service, complimentary rich buffet breakfast, 24/7 multi-lingual reception & concierge services, Free Wi-Fi in hotel lobby and in all our rooms, Tickets for public transport (sold at the reception desk), Currency Exchange, Luggage storage, Elevator, Air conditioning, Laundry, Meeting room, Garage parking near the hotel (20EUR/24 hours), Airport pick-up (640 CZK per regular car).

Masarykova kolej **+ / ** - CTU student residence, Thákurova 1, Prague 6



Masarykova kolej is one of the accommodation facilities of the Czech Technical University in Prague. It is conveniently located on the CTU campus, just 15 minutes from the conference venue (from the metro station Dejvická to station Muzeum). All rooms in the **+ hotel part are equipped with their own bathroom and WC and other amenities. **Connection to the conference venue:** approx. 15 minutes by metro.